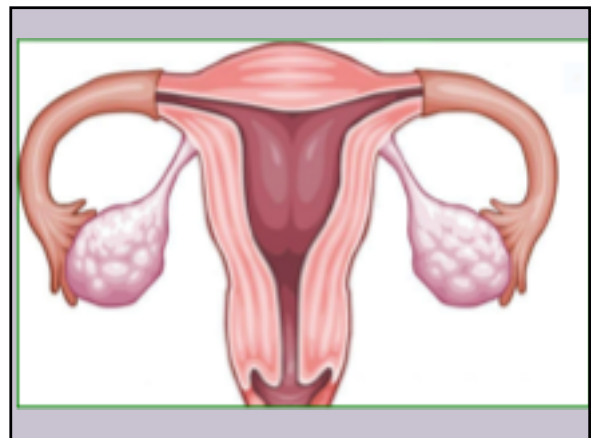
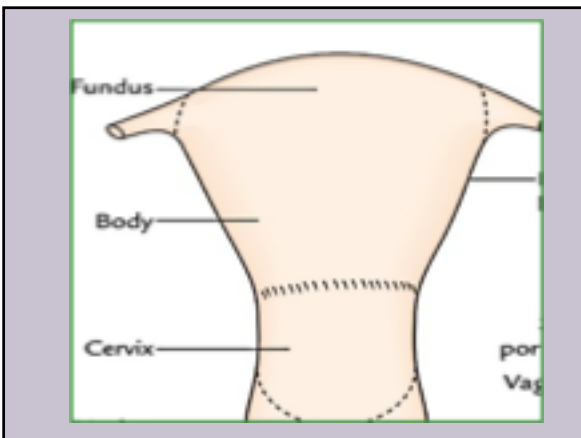
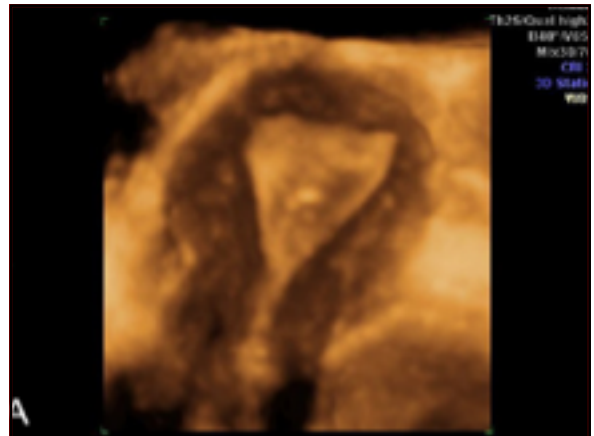
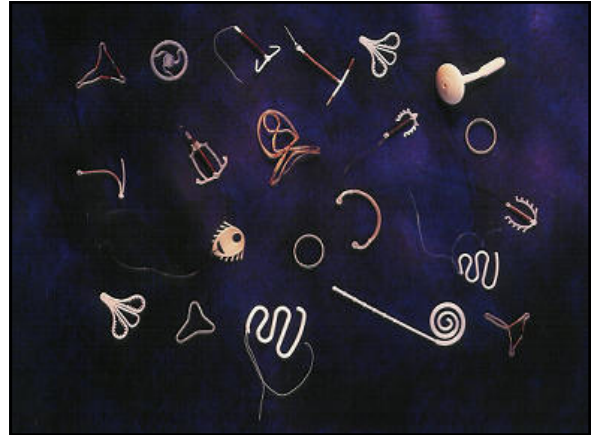
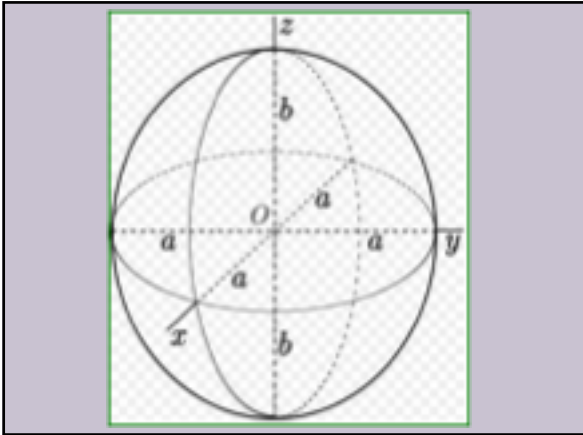


**Dimensional analysis of the endometrial cavity: how many dimensions should the ideal intrauterine device or system have?**

Norman Goldstuck  
Department of Obstetrics and Gynaecology, Faculty of  
Medicine and  
Health Sciences, Stellenbosch University and Tygerberg  
Hospital, Western Cape, South Africa.

No commercial interests





Prolate Ellipsoid Formula

$$V = 4/3\pi \times L/2 \times W/2 \times AP/2$$

Table 1. Endometrial cavity and volume relationships					
Volume(ml)	Length(mm)	Width(mm)	Antero-posterior (mm)	Comments	
5	25	20	19.12		
5	40	38	6.29	AP much smaller than length and width	
10	25	20	38.24		
10	40	38	12.61		
7.5	32.5	29	15.22		

