

MANCHESTER 1824 The University of Manchester

East Lancashire Hospitals NHS Trust

1935

Are we underestimating the value of postnatal contraceptive advice?

¹ Ruwini Dassanayake Aratchige
² H. Ribbans
² T. Dwivedi

¹ University of Manchester, UK
² East Lancashire Hospitals NHS Trust, UK

1

Standard

- In all postnatal women, contraception should be discussed within the first week of the birth.

NICE CG37, 2006, Routine postnatal care of women and their babies

2

Methodology

- Retrospective
- East Lancashire Hospitals NHS Trust (ELHT) in the UK
- Women who delivered between Oct 2010 and Sept 2011 with a subsequent abortion within 6 months
- Maternity and abortion notes reviewed

3

Methodology

Data collected included:

- Postnatal contraceptive advice given
- Age & demographic data
- Contraception used prior & after abortion
- History of domestic violence and safeguarding issues

4

Results

- 77 women - had abortion within 6 months of delivery
- 4.7% of abortions and 1.2% of deliveries in East Lancashire in 2010/2011
- Sample size: **57 patients** (20 notes unavailable)

5

Postnatal contraceptive advice

Category	Percentage
Contraceptive advice given	40%
No contraceptive advice given	60%

6

Postnatal contraceptive advice

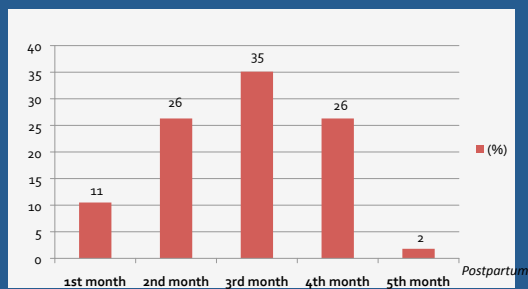
- 44% of women with history of domestic violence
- 29% of those with safeguarding issues

7

Key Results and Risk Factors

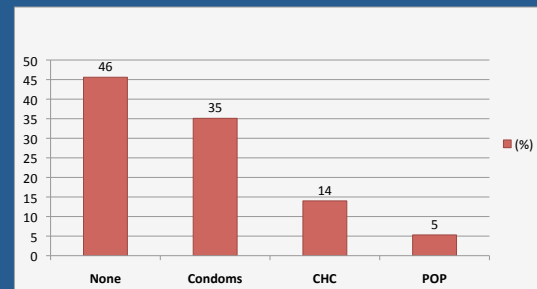
8

How soon after delivery did the women conceive?



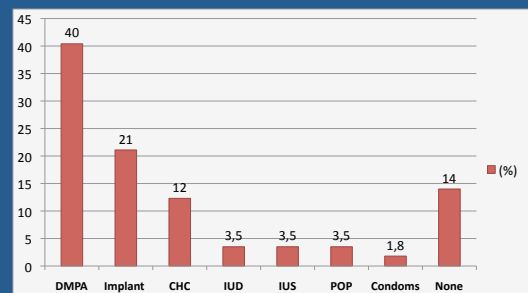
9

Type of contraception used prior to abortion



10

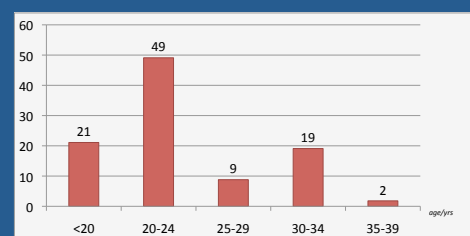
Type of contraception given after abortion



LARC= 68.5%

11

Age of women (at abortion)



70% - under 25 years

12

Ethnicity

- 72% - White
- 25% - Asian background

13

Parity

80 % had 2 or more children

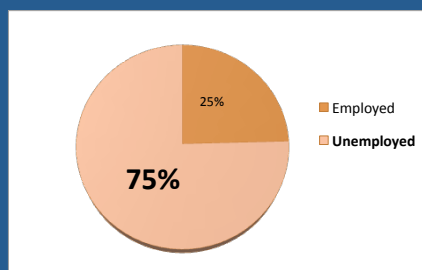
14

Delivery route

- 81% - NVD
- 11% - Caesarean section
- ELHT caesarean rate – 23%

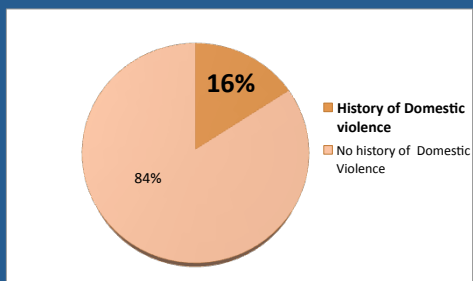
15

Employment



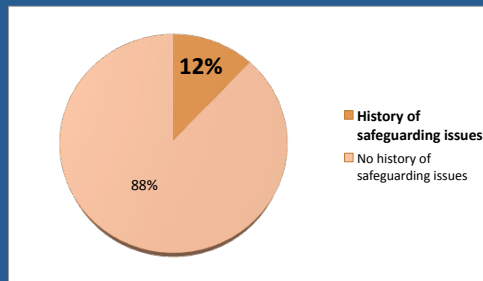
16

Domestic Violence



17

Safeguarding Issues



18

Recommendations

- Improve documentation
- Highlight need to discuss and record contraceptive plans
- New tear out section in postnatal notes includes contraceptive information
- Focus on women with risk factors- including disclosed domestic violence, young age .

19

Summary

Results	(%)
Postnatal contraceptive advice within one week of birth	40
No contraception used prior to abortion	45
Conceived within 3 months postnatal	72
Contraceptive advice given to women who disclosed domestic violence	44
Contraceptive advice given to women who disclosed safeguarding issues	29

20

Thank You!

21